



4 Milldale Road
Leigh, WN7 3PP
Offers In The Region Of £205,000



4 Milldale Road, Leigh, WN7 3PP

Nestled on the charming Milldale Road in Leigh, this refurbished semi-detached bungalow is a true gem waiting to be discovered. As you step into the property, you are greeted by an inviting entrance hall that leads you to a cosy lounge, perfect for relaxing evenings. The modern fitted kitchen is a chef's delight, offering a space to create culinary masterpieces.

With two bedrooms, this home provides ample space for a small family or those looking for a guest room or home office. The bathroom with a three-piece suite adds a touch of luxury to everyday living.

Outside, a driveway leading to a garage ensures convenient parking, while the gardens to the front and rear offer a tranquil retreat to enjoy the outdoors.

Don't miss the opportunity to make this charming semi-detached bungalow on Milldale Road your new home sweet home.



Hallway

Lounge

16'0" x 11'3" (4.88 x 3.44)

Kitchen

13'11" x 7'6" (4.25 x 2.29)

Bathroom

Bedroom One

12'8" x 9'0" (3.88 x 2.76)

Bedroom Two

10'6" x 10'5" (3.21 x 3.18)

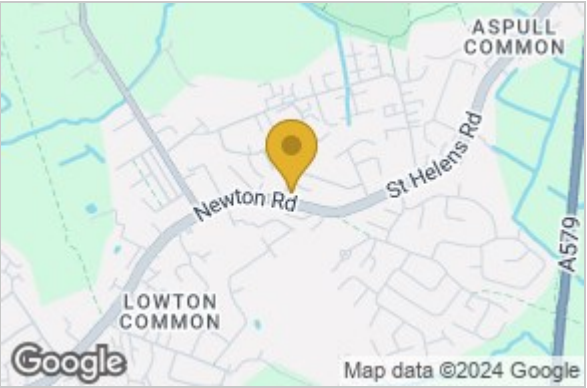
Driveway & Garage

Front Garden

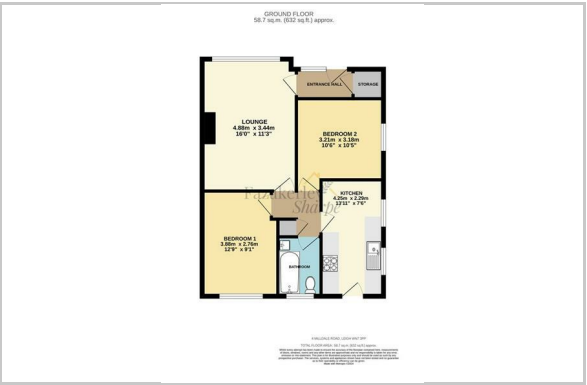
Rear Garden



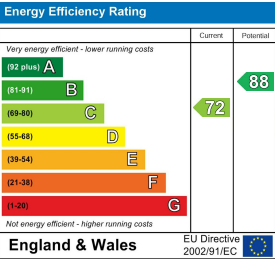
Area Map



Floor Plan



Energy Efficiency Graph



These particulars, whilst believed to be accurate are set out as a general outline only for guidance and do not constitute any part of an offer or contract. Intending purchasers should not rely on them as statements of representation of fact, but must satisfy themselves by inspection or otherwise as to their accuracy. No person in this firms employment has the authority to make or give any representation or warranty in respect of the property.